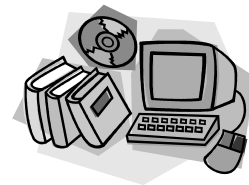


PART 2
Reviewing the Literature & Developing a Hypothesis



Background Information – The Literature Review

Background information or a literature review is a formal discussion of what is already known about your investigation topic.

A literature review begins with research about what is already known about your topic. You will collect notes from various sources and then use these notes to write a report.

A literature review does NOT include your question, procedure, or any other part of the investigation.

It does include, historical information, scientists who made an impact in the field, definitions, drawings & diagrams, and anything that is currently known about any part of your topic.

You must have at least 3 sources of information. One source must be from an online resource. Only one encyclopedia (online or print) will be counted. You may use as many sources as you wish.

Things to Include in Your Research:

- 📖 Current theories and explanations
- 📖 Impact of the topic on society
- 📖 History of the topic
- 📖 Scientists who have contributed to the topic
- 📖 Drawings & diagrams

A literature review contains information from as many sources as available.

Academic Integrity:

A literature review is a summary of information already known about your topic. The summary is written by **YOU**, the researcher. With the availability of information on the internet, it is sometimes tempting to take the easy way out and just copy and paste information into a report.

However, this is plagiarism. It is the theft of intellectual property. It is unethical. It is illegal.

A person who steals (and that's what copying & pasting is) the work of another and claims it for his / her own loses respect and credibility. In a professional situation, a person who plagiarizes may be subject to legal sanctions. In this class a person who does this will lose credit for the assignment. **Plagiarism of any kind will result in a grade of "0"** for the report; and then the report will have to be re-written honestly.

Do the right thing from the beginning.



The Hypothesis

After the literature review, you will have enough information to make an educated guess as to the outcome of your experiment.

What is the expected outcome of the experiment? The hypothesis must show a reasonable relationship between the question and the predicted results.

A hypothesis is always supported with evidence from the literature review; explain why this is your hypothesis.

A hypothesis begins with "It is hypothesized that..."